

Engineering  
Tomorrow with  
**STRENGTH &  
INNOVATION**

# Raydean Enterprises: BUILT ON STRENGTH, DRIVEN BY INNOVATION

## The Genesis: A VISION IN 2008

Founded in 2008 by Mr. Sanjeev Dakshini in Jaipur, Raydean Enterprises began its journey with a vision to elevate urban infrastructure. Starting with the manufacture of decorative street light poles that combined functionality with aesthetics, the company quickly gained recognition for quality and design—laying a strong foundation for future expansion.

## Milestones **AT A GLANCE**

- 1 GWp rooftop solar structures delivered plus 3gwp of ground mounted structures
- 7.5 lakh solar water pumping systems installed
- 40,000 solar water tank structures supplied
- 200MWp of carport structures.

## Today's **RAYDEAN**

Now a leading name in structural engineering for the solar and telecom sectors, Raydean brings over two decades of domain expertise to deliver cost-effective, high-performance solutions pan India. Our offerings include solar module mounting structures, telecom towers, and other infrastructure support systems.

Operating from a state-of-the-art 250,000 sq. ft. facility equipped with advanced CNC and galvanizing capabilities, and powered by a skilled workforce of 800+, Raydean boasts a production and galvanizing capacity of up to 8000 MT per month. Our in-house design and engineering teams enable customized, end-to-end solutions tailored to client needs across India and global markets.



### **VISION:**

To be the most customer-centric company in India.



### **MISSION:**

To be a competitive organization providing value to its customers, and employees through sustained delivery of high-quality products and services at competitive costs.

# MANUFACTURING CAPACITY OVERVIEW – RAYDEAN



Based in Bagru, Rajasthan, Raydean is a leading manufacturer of solar structures, telecom towers and transmission line structures. Strategically located to meet the demands of India's infrastructure and renewable energy sectors, Raydean delivers high-quality, fabricated and galvanized steel solutions.

## Manufacturing Infrastructure:

Raydean operates out of a state-of-the-art **250,000 sq. ft. facility**, equipped with advanced machinery to support high-precision, large-scale manufacturing.

**250,000**  
sq. ft. facility

## Production Capacity:

**Daily  
Output:**

Up to **250**  
Metric Tons

**Annual  
Capacity**

**90,000**  
Metric Tons



## KEY MACHINERY & EQUIPMENT



Raydean's facility is equipped with a comprehensive range of advanced machinery to ensure high-precision fabrication and efficient production:

### 4 CNC Plasma Cutting Machines

For accurate and efficient structural steel cutting

01

### 2 High-Speed Hat Section Roll Forming Machines

Specialized for manufacturing hat profiles used across structural applications.

02

### 5 CNC C/Z-Section Roll Forming Machines

For producing cold-rolled C-section steel profiles with high strength and consistency.

03

### 40+ Press Machines

Supporting diverse fabrication needs including punching, bending, and shaping.

04

### 50+ Welding Machines

Ensuring strong, reliable welds across all structural components.

05

## Galvanizing Facilities

Raydean operates two in-house galvanizing units to enhance product durability and corrosion resistance:

6-meter and 4-meter galvanizing baths

Combined daily capacity: 150 Metric Tons

These facilities enable all products to meet rigorous industry standards for longevity and protection.

## LEADERSHIP TEAM



**MR. SANJEEV DAKSHINI**  
(Founder & Chairman)



**MR. SAMARTH DAKSHINI**  
(Managing Director)



**MR. SANDEEP DAKSHINI**  
(Director)



**MR. SOUMYA DAKSHINI**  
(Director)

## Leadership and Vision

Under the leadership of Mr. Sanjeev Dakshini, Founder & Chairman, and Mr. Samarth Dakshini, Managing Director, Raydean Enterprises has consistently pursued excellence and innovation. Their vision to be the most customer-centric company in India drives the organization's mission to deliver high-quality products and services at competitive costs. The company's core values—integrity, customer focus, respect, continual improvement, accountability, and safety—form the foundation of its operations and interaction

## CHAIRMAN'S MESSAGE



**MR. SANJEEV DAKSHINI**  
(Founder & Chairman, Raydean Enterprises)

“

It gives me immense pride and gratitude to address you as the Founder and Chairman of Raydean Enterprises. Since our inception, Raydean has stood as a testament to vision, resilience, and innovation. What began as a modest initiative driven by a passion for excellence has now evolved into a respected name in our industry—a name synonymous with trust, quality, and forward-thinking solutions.

The journey has been one of purpose. Every challenge we've encountered, every milestone we've achieved, has strengthened our resolve to do better—not only for our clients and partners, but also for the communities we serve. At Raydean Enterprises, we believe that success is not measured solely by financial achievements, but by the positive impact we make on the world around us.

Our core philosophy is built on integrity, innovation, and inclusivity. These values are not just ideals; they are the foundation of every decision we make, every product we design, and every relationship we nurture. We are committed to delivering excellence in every sphere of our operations, while always staying grounded in our responsibility to people and planet.

As Raydean Enterprises evolve at an unprecedented pace, so do we. At Raydean, we are continuously exploring new technologies, sustainable practices, and growth opportunities that align with our long-term vision. Embracing change while preserving our foundational values has been key to our continued relevance and growth.

Our team is our greatest strength. It is their dedication, skill, and shared belief in our mission that empowers us to rise above challenges and innovate relentlessly. I take this opportunity to extend my deepest appreciation to each member of the Raydean family—our employees, partners, clients, and well-wishers. Your faith in our journey fuels our ambitions and drives us forward every single day.

We are also deeply aware of our social responsibilities. Through various CSR initiatives, Raydean Industries remains committed to contributing to education, environmental protection, and community development. We do not just aim to be a successful enterprise—we strive to be a responsible one.

As we look ahead, I am excited about the future. We are embarking on a new chapter of expansion, sustainability, and global collaboration. With innovation as our compass and excellence as our goal, we are ready to seize the opportunities that lie ahead and create lasting value for all our stakeholders.

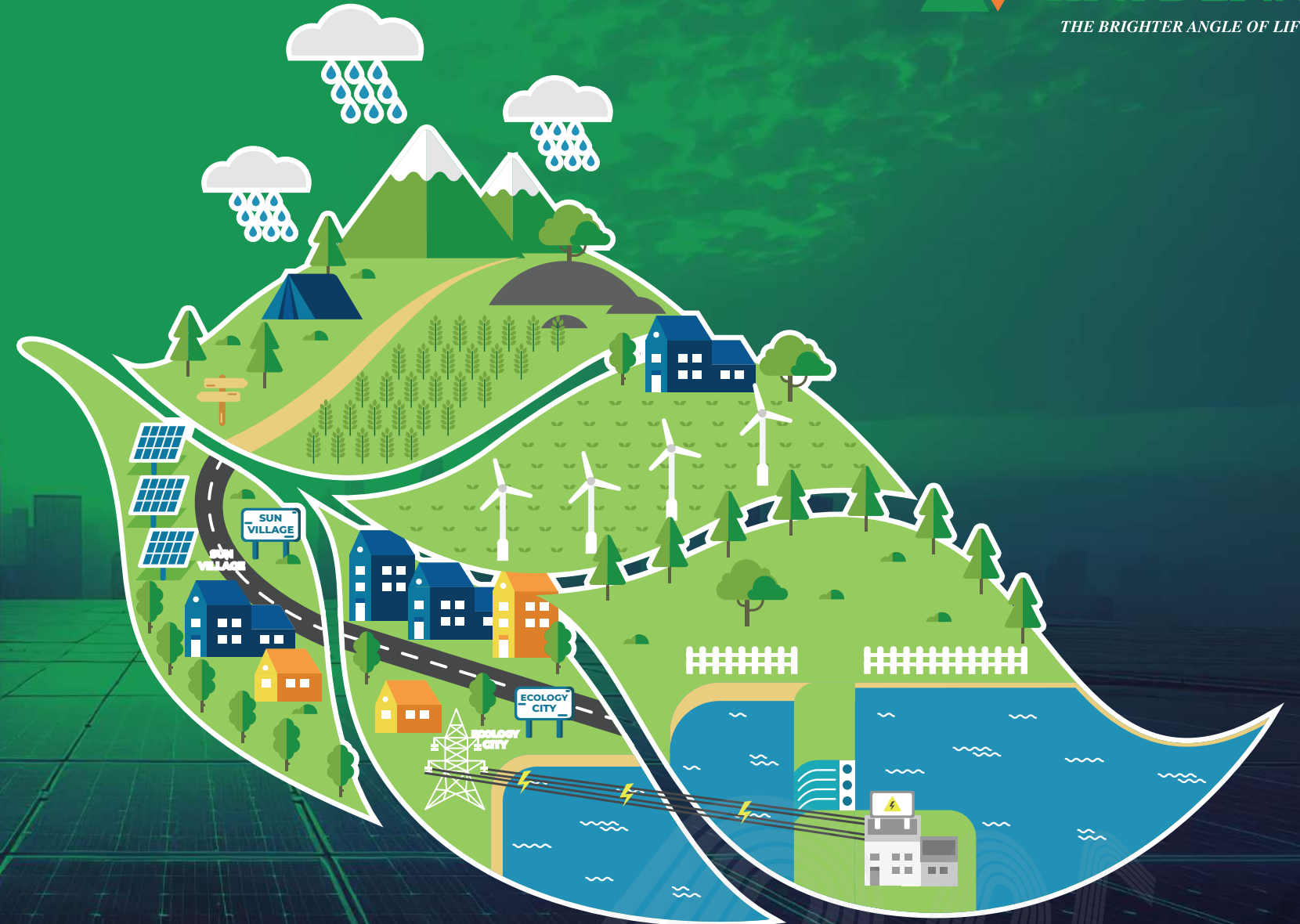
Thank you for being a part of our story. Together, let us continue to build a legacy that reflects not only achievement, but purpose and positive change.

Warm regards.



”

# BUSINESS VERTICALS OVERVIEW



## Solar Structure Solutions – Built for Strength, Speed & Sustainability

Raydean designs and manufactures high-performance solar mounting structures, including ground-mounted fixed tilt systems, solar water pumping structures, rooftop solutions, carports, and tracker components. Engineered from high-grade steel and precision-formed C/Z/HAT sections, piers, and torque tubes, our structures offer durability, corrosion resistance, and quick installation across varied terrains.

## Pioneering Solar Water Pumping Structures

In 2012, Raydean entered the solar water pumping space, becoming an early innovator in sustainable irrigation solutions. These structures use solar energy to power pumps, reducing dependence on conventional electricity and diesel—especially in rural and agricultural sectors.

## Driving National Sustainability Goals

With over 7.5 lakh solar water pumping systems, 1 GWp of rooftop structures, 2 GWp of Ground mounted structures and 40,000 solar water tank frames delivered, Raydean plays a key role in renewable infrastructure. Our active support of initiatives like the PM Kusum Yojana and PM Surya Ghar Yojna reflects our deep commitment to sustainable growth and energy access across India.



## Solar Product Range: SPV GROUND MOUNTED STRUCTURES

Raydean offers robust Ground Mounted Fixed Tilt Module Mounting Structures (MMS), backed by advanced in-house capabilities in fabrication, roll forming, and hot-dip galvanizing (HDG).

**C/Z  
Structure  
Capacity:**

**40,000 MTPA**  
(5 high-speed C-section roll  
forming machines)

**HAT  
Structure  
Capacity:**

**24,000 MTPA**  
(2 high-speed HAT section  
machines)

Our MMS solutions are engineered for precision, durability, and easy integration into customizable table lengths, meeting varied site and client requirements.

We have supplied more than 3GWp of Ground Mounted structures.

Manufactured from high-quality HR coils and HDG-coated for corrosion resistance, our product range includes C-channels, Z-sections, HAT/OMEGA sections, L-angle bracing, and tubular posts—ensuring long-term performance in demanding environments.

# Solar Product Range: SPV SPV WATER PUMPING STRUCTURES (PM-KUSUM YOJANA – COMPONENT B)



Raydean is a leading manufacturer of SPV-based module mounting structures for agricultural and potable water pumping systems under the Government of India's PM-KUSUM Yojana. With a **daily production capacity of 1,000 structures**, we support the nationwide push for solar-powered irrigation and water access.

As part of the target to install **35 lakh solar water pumps across India**, Raydean has already supplied over **7.5 lakh structures** across multiple states. Our structures are engineered for durability, quick installation, and optimal solar performance—contributing to the growth of India's agriculture sector through clean energy solutions.

Daily production capacity of  
**1,000 structures**

**35 lakh**  
solar water pumps across India

**7.5 lakh**  
structures



## **Solar Product Range: SPV SPV FIXED TILT ROOFTOP STRUCTURES (PM SURYA GHAR YOJANA)**

Raydean has delivered 1+ GWp of rooftop solar structures nationwide, supporting large-scale solar initiatives like the PM Surya Ghar Yojana.

Made from high-quality galvanized steel, our structures are designed for durability, quick installation, and precise fitment using advanced jigs and fixtures—reducing time and labour costs.

We offer flexible, cost-effective solutions for residential, commercial, and industrial rooftops, including factories, airports, hospitals, and more. With in-house design, fabrication, and ISO 1461:2009 & CE certifications, Raydean ensures quality, reliability, and performance in every project.

## Solar Product Range: SPV SOLAR HIGH MAST SYSTEMS

Raydean delivers high-quality solar high mast lighting systems designed for reliable, long-term performance. With over **20,000 units supplied**, our solutions are trusted by government bodies, PSUs, and leading corporations.

Crafted from premium raw materials sourced from top suppliers like SAIL and TATA, our poles are ideal for area lighting, sports venues, flag hoisting, signage, and surveillance applications. Each mast undergoes hot-dip galvanization for superior strength and corrosion resistance, ensuring durability in diverse conditions.



**20,000**  
units  
supplied

# INFRASTRUCTURE PRODUCTS



## Transmission Line Structures (33–440 kV)

Raydean produces lattice towers for 33–220 kV transmission lines, designed for resilience under extreme conditions. These structures ensure reliable power and signal transfer across long distances, combining structural integrity with high-performance engineering.



## Telecom Towers

With a monthly capacity of 1,000 MT, Raydean has delivered over 2,000 telecom towers nationwide. Our galvanized tubular towers are built for strength, durability, and corrosion resistance—supporting antennas for mobile, radio, and satellite communication. Offerings include GBT/GFT towers (up to 60m), rooftop towers (up to 9m), tri-band narrow-based towers (up to 25m), and welded masts.



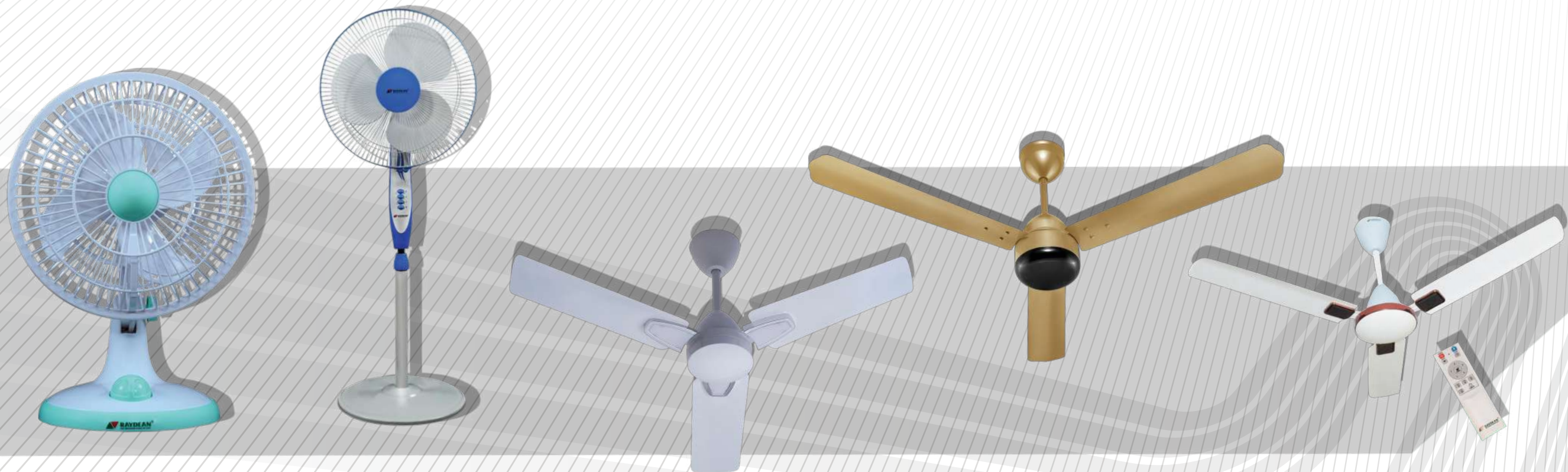
## Substation Structures

Engineered for durability and precision, our substation structures support key electrical components—transformers, breakers, and busbars. They are corrosion-resistant, weatherproof, and optimized for easy maintenance, ensuring reliable power distribution and grid stability.

## AN OVERVIEW OF ELECTRICALS & OTHER CONSUMER PRODUCTS

Raydean Eco Ease, a forward-thinking venture by Raydean Enterprises, is redefining the home appliance market with its extensive range of energy-efficient BLDC fans tailored for modern, sustainable living. Designed to deliver exceptional performance with up to 50% energy savings, the product lineup includes table, wall, pedestal, and ceiling fans, all equipped with advanced features such as inverter technology, smart regulators, remote controls, and built-in thermal protection. Notable series like Ozon, Eco Prime, and Elite offer high-speed airflow with silent operation, while Eco Breeze and Lumi Breeze stand out as rechargeable ceiling fans with smart inverter tech and integrated LED lighting—ideal for power outages and smart homes. The Eco Floora pedestal fan and compact rechargeable table fans further add to the brand's promise of mobility, performance, and design elegance.

Built with lithium-ion battery backup, intelligent power management, and sleek aesthetics, Raydean Eco Ease products cater to residential, commercial, and off-grid usage. With a firm commitment to affordability, quality, and environmental responsibility, the brand is rapidly positioning itself as a leader in the eco-friendly home appliance segment in India and beyond.



# FUTURE READY SOLUTIONS

## Single Axis Solar Tracker RayTrack

Raydean Enterprises is proud to announce the launch of its innovative, indigenously developed Single Axis Solar Tracker, RayTrack. Designed and manufactured entirely in India, RayTrack reflects our commitment to technological advancement, sustainability, and self-reliance under the “Make in India” initiative.

As a forward-thinking company in the renewable energy sector, Raydean Enterprises continues to push the boundaries of efficiency and innovation. RayTrack is engineered to optimize solar energy capture by aligning solar panels with the sun’s movement throughout the day, increasing energy yield by up to 25–30% compared to static systems.

Our in-house R & D team has designed RayTrack to be robust, cost-effective, and suitable for varied terrains and climatic conditions across India. With easy installation and minimal maintenance, it meets the growing demand for scalable solar infrastructure, catering to both utility-scale and commercial projects.

This milestone marks a significant step in our journey toward energy independence and carbon neutrality. Raydean Enterprises remains dedicated to delivering high-performance solar solutions that empower our clients and contribute to a greener tomorrow.

Join us in revolutionizing the future of clean energy—powered by innovation, built in India.



## EPC Division



Raydean Enterprises is a leading player in the renewable energy sector, specializing in comprehensive EPC (Engineering, Procurement, and Construction) services for solar energy projects across India. With a strong focus on innovation, quality, and sustainability, Raydean is proud to contribute to the nation's green energy transition by executing a wide range of government and private sector projects.

One of our core areas of expertise is implementing projects under the PM-KUSUM Yojana, a flagship scheme by the Government of India aimed at promoting solar power generation for agricultural use. Under this initiative, Raydean Enterprises has successfully delivered numerous solar pump and grid-connected solar installations, enabling farmers to access reliable and cost-effective clean energy solutions.

In addition to government-led initiatives, Raydean Enterprises undertakes large-scale solar power plant projects, providing end-to-end EPC services including project design, engineering, procurement of high-quality components, on-site installation, and commissioning. Our team of experienced engineers and project managers ensures that each project is delivered on time, within budget, and in compliance with the highest industry standards.

Raydean Enterprises' strength lies in its deep technical knowledge, robust project execution capabilities, and commitment to sustainable development. By integrating cutting-edge technologies with customized energy solutions, we continue to support India's ambitious renewable energy goals.

Our mission is to power progress through clean energy, create long-term value for our clients, and contribute to a greener, more self-reliant India.

# KEY PROJECTS, CLIENTS & PARTNERSHIPS



# CLIENT TESTIMONIALS

# Feedback



Date: 14<sup>th</sup> July 2025

TO WHOMSOEVER IT MAY CONCERN

This is to confirm that M/s. Raydean Enterprises Private Limited has successfully completed the supply against the following project and Purchase order numbers: -

Purchase Order Number	Quantity (MT)	Project Name
5000062398	162MT	Baroda Dairy-9 Mw Project- Baroda
5000062280	266 MT	Noida Airport Authority - Noida
5000055717/55723/59801/5727/59802	1257 MT	20MW Maruti Suzuki Caprot Structure - Sonapat Haryana

The supply was completed within the stipulated time frame and with good quality products.

We wish them all the very best for their future engagements.

For TATA POWER RENEWABLE ENERGY LTD

  
Mr. Manish Virdi  
Head - Procurement - PPTP

**TATA POWER RENEWABLE ENERGY**

Tata Power Renewable Energy Limited

(Formerly known as Tata Power Solar Systems Limited)

Address: Plot No. 78, Electronics City Phase I, Hosur Road, Bengaluru - 560100

Corporate office: Tata Power Corporate Centre, 14<sup>th</sup> Floor, T. Nagar, Chennai - 600009

CIN: U43108MH4000791368734 E-mail: info.solar@tatapower.com Website: www.tatapower.com/renewables

**WAAREE | RTL**  
Execution with Pace & Comfort

Ref : WAAREE/RAYDEAN/01

Date : 14.07.2025

TO WHOM SO EVER IT MAY CONCERN

THIS IS TO CERTIFY THAT M/S RAYDEAN ENTERPRISES PVT LTD HAVING ITS OFFICE AT PLOT NO. G-87 TO G-94, B, RIICO INDUSTRIAL AREA, EXT.-II, NEAR 33KV SUB-STATION, BAGRU, JAIPUR, RAJASTHAN - 303007 HAS SUPPLIED SOLAR MMS STRUCTURE.

SR. NO.	PO NO.	PO DATE	DESCRIPTION	TOATL QTY.
1	5100002080	12/02/2025	COLUMN POST	50000 NOS
2	5100002080	12/02/2025	COLUMN EXTENSION	50000 NOS
3	5100002138	20/02/2025	COLUMN EXTENSION	25000 NOS

WE CONFIRM THAT ABOVE SAID SUPPLY OF SOLAR MMS STRUCTURE IS SATISFACTORY AND COMPLETED WITHIN THE STIPULATED TIME FRAME. THE MATERIAL HAS BEEN ERECTED WITHOUT ANY QUALITY COMPLAINT.


**Waaree Renewable Technologies Limited**  
(A subsidiary of Waaree Energies Limited)

S04, Western Edge-1, Off Western Express Highway, Borivali (E), Mumbai 400 066, Maharashtra INDIA

Tel : +91 22 6644 4444  
E : info@waareertl.com  
W : www.waareertl.com

CIN : L93000MH1999PLC120470  
GST : 27AADCS1824J2B



**Partner with Raydean – where  
engineering meets vision.**



**Corporate office**  
**Jaipur, Rajasthan (India)**

Raydean Enterprises, 2nd Floor, West Side, Malwa Tower, A-13&37,  
Hanuman Nagar, Jaipur-302 021 Rajasthan (India)